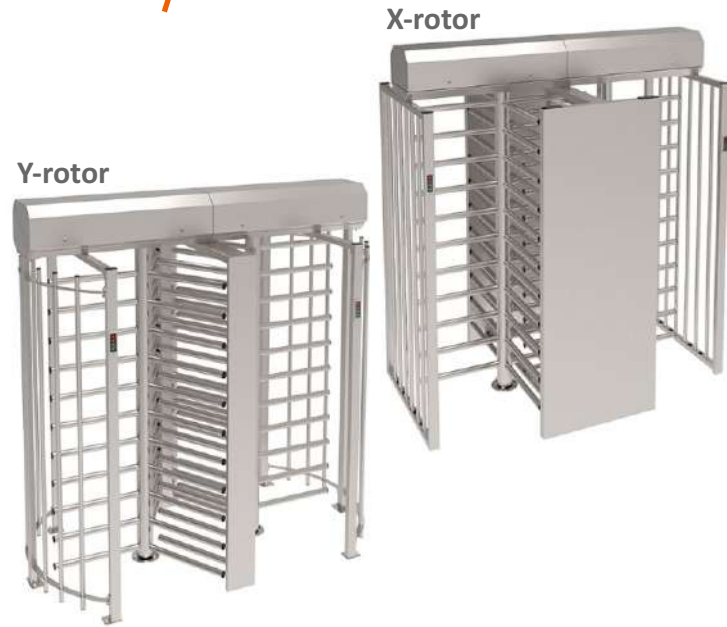


# SESAME TWIN


## FULL-HEIGHT TURNSTILE

Sesame Twin is a so-called double turnstile. This pedestrian security gate benefits with significant space and cost saving in comparison to two single turnstiles installed one near another.

It is a perfect fit for applications with highest intensity of pedestrian traffic, like stadiums or large factories. Can be supplied both in fully welded or assembly (attractive for transportation) design.



## MODEL OF THE FULL-HEIGHT TURNSTILE SERIES GUARANTEES FULL PROTECTION OF THE TERRITORY

 X-rotor: 570  
Y-rotor: 650  
mm  
PASSAGE WIDTH

 40  
pers/min  
SINGLE ACCESS

 60  
pers/min  
FREE ACCESS

 IP 41-65\*  
PROTECTIVE LEVEL

 BI-DIRECTIONAL

### Key advantages

- Highest security level, which can make stricter force control than other type of turnstiles
- Can be supplied as fully welded or in disassembled condition which has perfect effect to transportation cost
- Depending on installation place conditions and customer's requirements can be produced of different types of material, for outside/ inside applications, with Y-rotor/ X-rotor, electromechanical/ servo-driven, etc.
- Low noise system operation
- Successful combination of affordable price and high quality
- Wide range of accessories
- Steadfast housing suitable for high traffic areas
- Can be integrated with any type of access control systems
- Low power consumption
- Wired remote control panel is in a standard kit
- In case of power failure, fail-secure by default (rotor locked in both directions);

### Options

- Any access control systems upon request (e.g. passage counter, RFID/Proximity/BioMetric readers, coin acceptor, push button, barcode and QR-code reader)
- Option "Servo-drive" for full-height turnstile
- OEM / logo application
- Enlargement of passage width up to 800 mm
- Air Lock function (two-step approach) for Y-type rotor
- Heating/cooling option
- Weather pack - IP 54/IP 65
- Canopy/ Roof
- Lane light
- Ramped base mobile/ Square, perforated platform
- Ground frame for installation
- Fail-safe mode under request
- Emergency door

\* available upon request



www.tiso.global  
+380 (44) 291-21-11  
e-mail: sales@tiso.global



Technical Specifications:

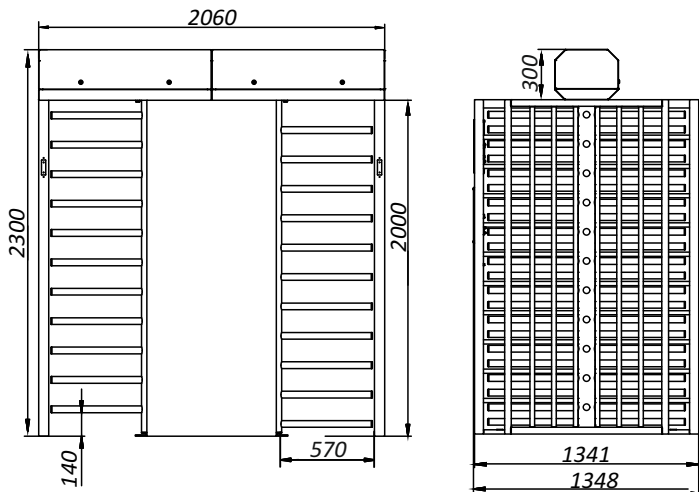
	X-type – 90°	Y-type – 120°
Unit width, mm	2060	2234
Unit length, mm	1341	1158
Unit height, mm	2300	2300
Passage width, mm	570	650
Mechanism	electromechanical (standard), servo-driven (option)	
MCBF, cycles	20 000 000 - electromechanical, 10 000 000 - servo-driven	
Standard housing	Brushed SS AISI 304	
Available housing	Brushed SS AISI 316	
	Polished SS AISI 304	
	Polished SS AISI 316	
	Hot dip galvanized	
	Powder coated RAL	



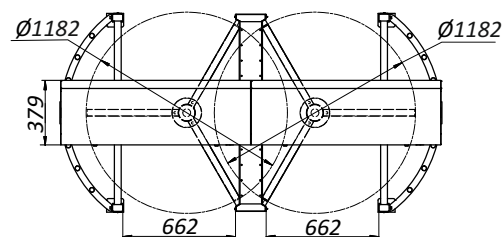
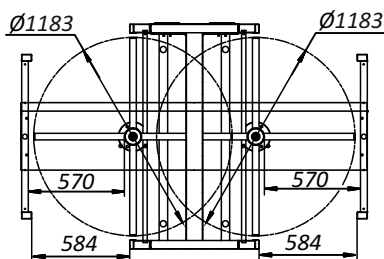
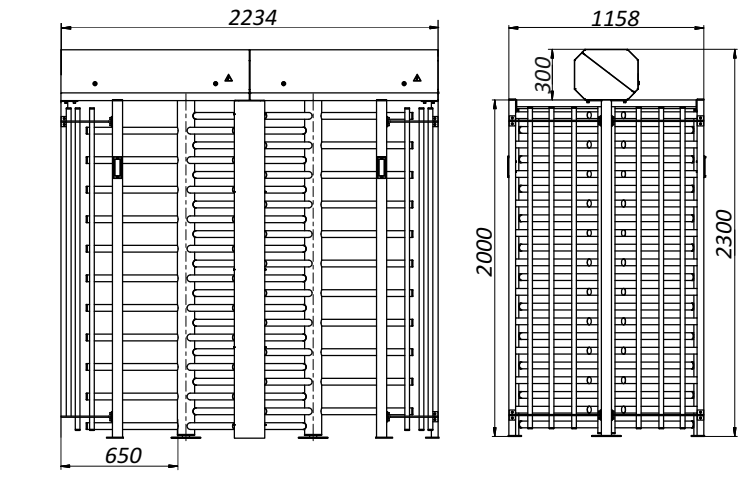
**Controlled by:**  
 access control system;  
 manual control

When power goes OFF both directions are locked.

X-rotor



Y-rotor



Recommended installation areas:

- Sport Complexes
- Recreation areas
- Governmental Institutions
- Production sites (Industrial Plants)
- Commercial areas
- Education Institutions
- Military Bases
- Urban areas
- Financial Institutions and others

